

CHANGE: New AD section - up-dated chart

STAR

BOLZANO

TRANSITION ALT 10.000

CHANGE: NEW AFIS CALL SIGN

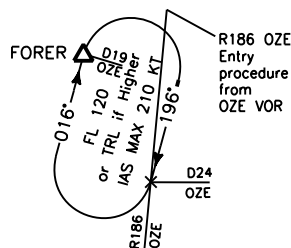
LEGEND

- STAR
 STAR ATC Discretion
 ATS ROUTES

FREQUENCIES

PADOVA ACC	125.90
	134.75
(AFIS) BOLZANO	
Aerodrome Info	120.60 (122.10)
FORER Holding Procedure	

INB. TR. R196 OZE VOR
HLD BTN D19 and D24 OZE



DISTANCES : NM
ALTITUDES : FEET
SCALE 1:500.000

577 2 0 2 4 6 8 10 NM
45° 30' 2 2 4 6 8 10 12 14 16 18 20 Km

GARDA CTR

279

FORER 1A

VIC VOR – TR 343° (RDL 343 VIC VOR) fino a 20 NM VIC DME, quindi virare a sinistra fino a intercettare e seguire ARC 26 NM OZE DME. Intercettando RDL 191 OZE VOR virare a destra su TR 016° (RDL 196 OZE VOR) per il punto FORER.

MEA/MEL: VIC VOR – RDL 343/20NM VIC VOR/DME – INT ARC 26 NM OZE DME/RDL 180 OZE VOR: FL 150, INT ARC 26 NM OZE DME/RDL 180 OZE VOR – FORER: FL 120 o/or TRL se più alto/*if higher*

FORER 1B

ALESE – TR 163° (RDL 343 VIC VOR) fino a 25 NM VIC DME, quindi virare a destra fino a intercettare e seguire ARC 26 NM OZE DME. Intercettando RDL 191 OZE VOR virare a destra su TR 016° (RDL 196 OZE VOR) per il punto FORER.

ALESE – RDL 343/25NM VIC VOR – INT ARC 26 NM OZE DME/RDL 180 OZE VOR: FL 150, INT ARC 26 NM OZE DME/RDL 180 OZE VOR – FORER: FL 120 o/or TRL se più alto/*if higher*

FORER 1C

ADOSA – TR 013° (RDL 193 OZE VOR) fino a 27 NM OZE DME quindi virare a sinistra fino a intercettare e seguire RDL 196 OZE VOR per il punto FORER.

MEA/MEL: ADOSA – RDL 193/27NM OZE VOR/DME: FL 140, RDL 193/27NM OZE VOR/DME – FORER: FL 120 o/or TRL se più alto/*if higher*

FORER 1D (A discrezione ATC)

BZO NDB – OZE VOR/DME – TR 186° (RDL 186 OZE VOR) fino a 24 NM OZE DME, quindi virare a destra fino a intercettare e seguire RDL 196 OZE VOR per il punto FORER.

MEA/MEL: BZO NDB – OZE VOR – FORER: FL 120 o/or TRL se più alto/*if higher*

FORER 1E (A discrezione ATC)

VIC VOR – TR 314° (RDL 314 VIC VOR) fino a intercettare RDL 191 OZE VOR, quindi virare a destra fino a intercettare e seguire RDL 196 OZE VOR per il punto FORER.

MEA/MEL: VIC VOR – FORER: FL 120 o/or TRL se più alto/*if higher*

FORER 1A

VIC VOR – TR 343° (RDL 343 VIC VOR) until 20 NM VIC DME, then turn left until intercepting and following ARC 26 NM OZE DME. Intercepting RDL 191 OZE VOR turn right on TR 016° (RDL 196 OZE VOR) bound to FORER.

FORER 1B

ALESE – TR 163° (RDL 343 VIC VOR) until 25 NM VIC DME, then turn right until intercepting and following ARC 26 NM OZE DME. Intercepting RDL 191 OZE VOR turn right on TR 016° (RDL 196 OZE VOR) bound to FORER.

FORER 1C

ADOSA – TR 013° (RDL 193 OZE VOR) until 27 NM OZE DME then turn left until intercepting and following RDL 196 OZE VOR bound to FORER.

FORER 1D (ATC discretion)

BZO NDB – OZE VOR/DME – TR 186° (RDL 186 OZE VOR) until 24 NM OZE DME, then turn right until intercepting and following RDL 196 OZE VOR bound to FORER.

FORER 1E (ATC discretion)

VIC VOR – TR 314° (RDL 314 VIC VOR) until intercepting RDL 191 OZE VOR, then turn right until intercepting and following RDL 196 OZE VOR bound to FORER.



AFIS Bolzano
Aerodrome Info 120.60
(122.10)

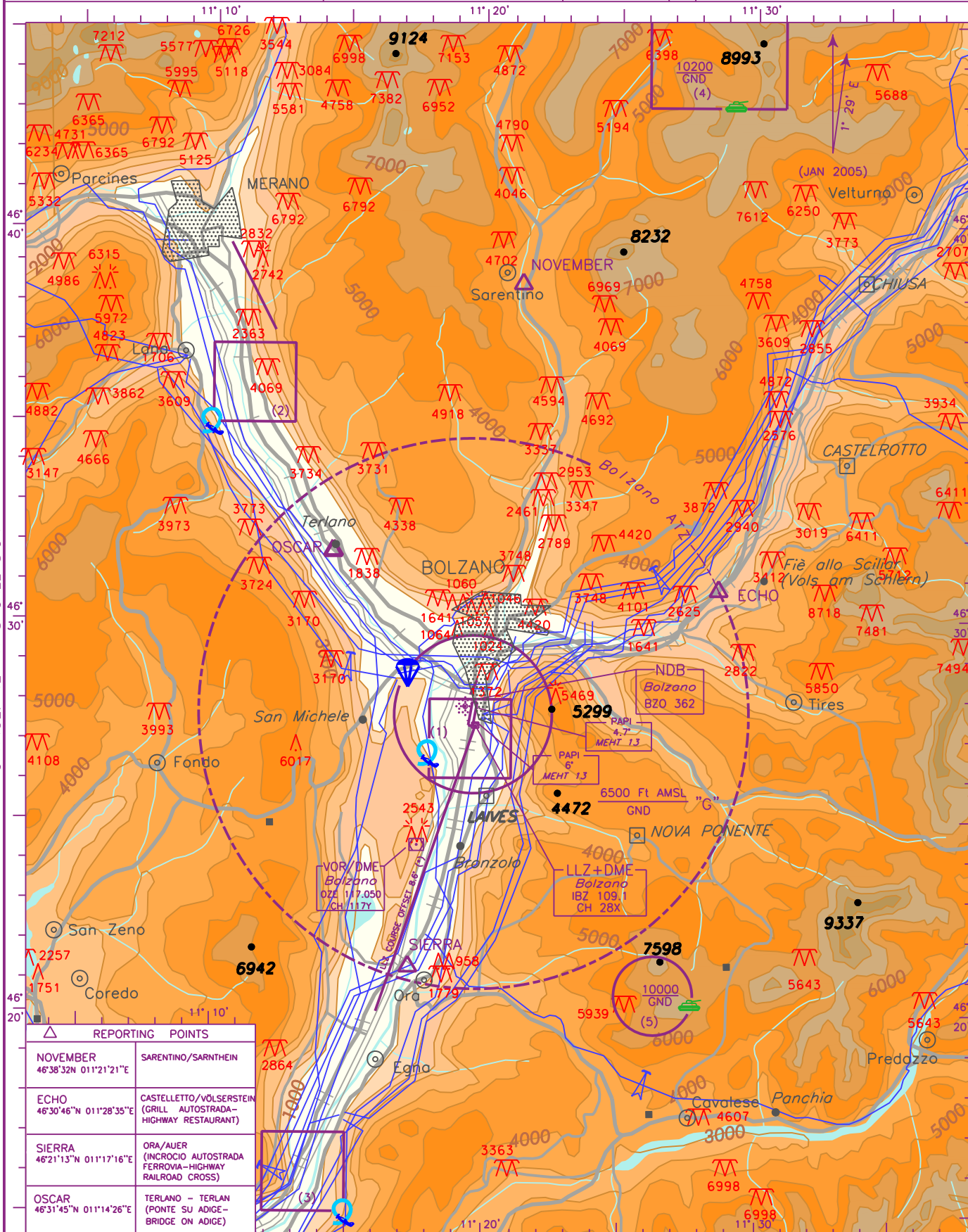
FIS Padova Info 124.15

AD ELEV
789

L
I
P
B

BOLZANO

CHANGE: NEW AFIS CALL SIGN



AIRSPACE CLASSIFICATION See AIP ENR 1.4

TRANSITION ALT 10000 Ft

Elev and Alt in Ft AMSL. Bearings are magnetic.

(*) See also AD 2 LIPB Table 22.4 and AD 2 LIPB 5-3

Parachuting activity: FL 140 (AIP-Italia ENR 5.5.1)

- (1) Aerobatic activity 1800-4800 FT AMSL (AIP-Italia ENR 5.5.2)
- (2) Aerobatic activity 3000-6000 FT AMSL (AIP-Italia ENR 5.5.2)
- (3) Aerobatic activity 3500-6500 FT AMSL (AIP-Italia ENR 5.5.2)
- (4) Military Area named Alta Val Durna. See ENR 5.2.1
- (5) Military Area named Passo Oclini. See ENR 5.2.1

LEGEND

- power line(with or without A)
- railroad
- Cableway

BOLZANO**VISUAL APPROACH CHART:**
Visual AIDS**Remarks:**

- 1) Contour lines every 250 Ft.
Obstacles altitudes in Ft.
- 2) For obstacle information
see AOCs and NOTAMS in force.
- 3) For RWY lights see AIP — AD 2 LIPB 1

PAPI limitations:

- 4) PAPI RWY 01:
angle 6°, METH 13 m;
right coverage reduced to 5°;
left coverage reduced to 8°;
PAPI OCS (obstacle clearance surface)
instrument, RWY code number 2.
Right wing normally operative;
left wing available as backup
- 5) PAPI RWY 19:
angle 4.7°, METH 13 m;
two sets opr as follows:
 - PAPI OCS (obstacle clearance surface)
non instrument: RWY code n. 2.
 - PAPI OCS (obstacle clearance surface)
affected by obstacles beyond
4.9 Km from the THR
 - PAPI usable only by day and only
within 4.9 Km from the THR
(PANS-OPS circling radius for CAT B occit)
 - one set normally operative,
the second one will be switched on
only in case of failure of first.







2419 
2543 

Scale 1:50,000



CHANGE: REPRINTING

LEGEND

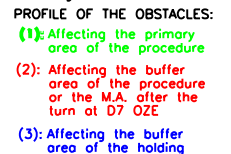
-  Obstacle Lights
-  Circling Flashing Light
-  Lead-in Flashing Lights
-  RWY THR Identification Lights
-  Power Lines
-  Tree


CHANGE: NEW AFIS CALL SIGN

BOLZANO
INSTRUMENT GUIDED CLOUD
BREAKING PROCEDURE
CFT CAT "A","B","C" RWY 01



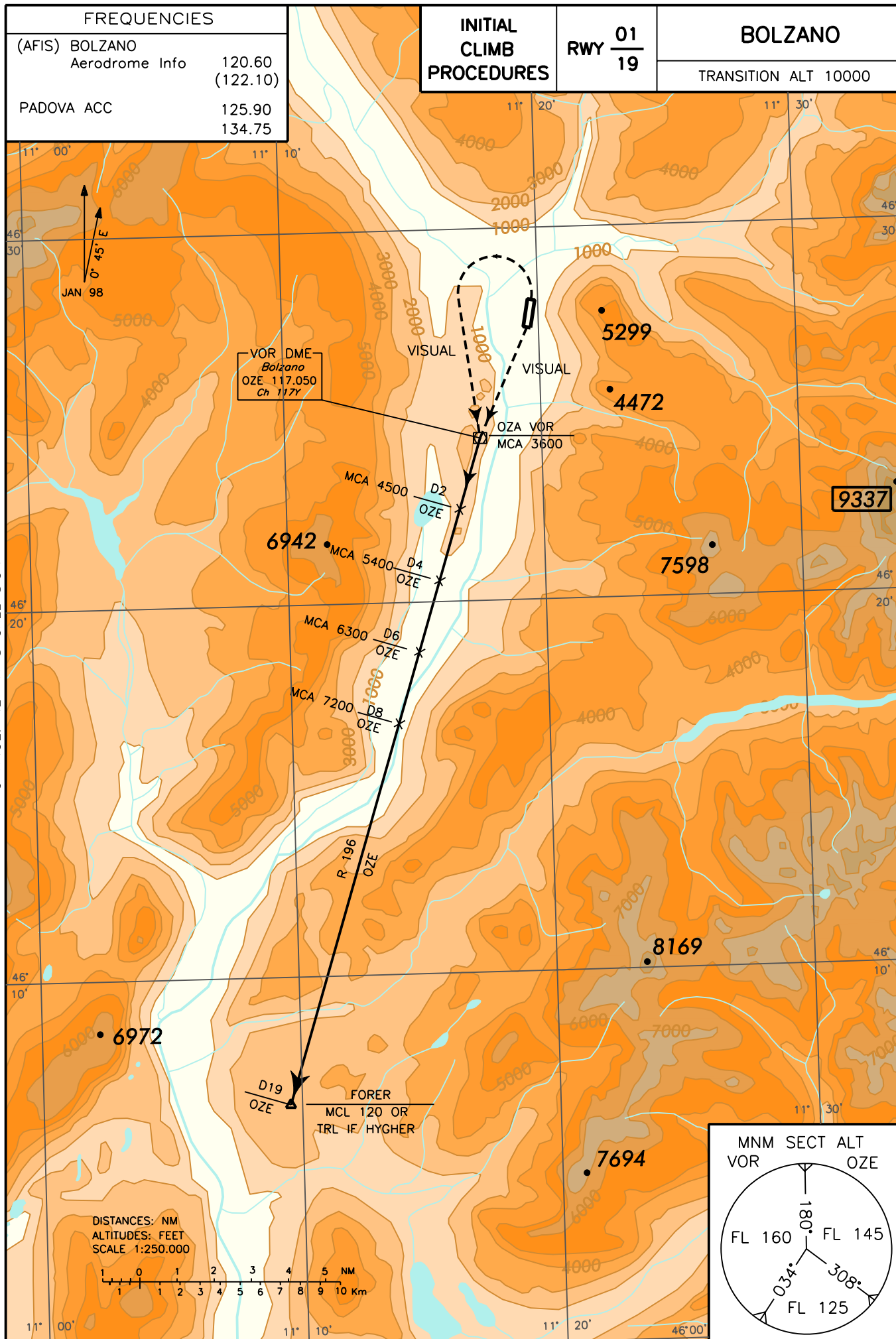
M.A.: IAS MAX 150 KT during the turn. Minimum climb gradient 6% until 6700 ft. At 4 NM IBZ DME (6 NM at 2.5%) turn left to follow RDL 005 OZE VOR/DME. At 7 NM OZE DME, to be reached at 5800 ft or above (6200 ft at 2.5%), turn left to follow RDL 346 OZE VOR/DME (track 160°) inbound to OZE VOR to be reached at 6700 ft or above. Then proceed on RDL 190 OZE VOR/DME inbound to FORER to be reached at FL 120 or TRL if higher.



OCA (OCH)			A	B	C	(*) TIMING NOT ALLOWED FOR DEFINING MAP1 (**) TRAFFIC CIRCUIT FOR RWY 19 ALLOWED ONLY DURING DAYLIGHT AND WEST OF THE FIELD	FAF-D10 (3 NM)			D10-MAP1 (6 NM)			MNM SECT ALT VOR OZE 
STRAIGHT IN APPROACH	LLZ + DME	M. A. MNM CLIMB GRADIENT 6%	3450 (2679)				FT PER MIN	GS	(*) TIMING	FT PER MIN	GS	(*) TIMING	
		M. A. MNM CLIMB GRADIENT 2.5%	4850 (4079)				1600	160	1 : 08	1670	160	2 : 15	
					1400		140	1 : 17	1460	140	2 : 34		
					1200		120	1 : 30	1250	120	3 : 00		
					1000		100	1 : 48	1040	100	3 : 36		
CIRCLING			NOT ALLOWED (**)			800	80	2 : 15	835	80	4 : 30		

19 JUN 2008 (7/08)

Only specifically trained crews with authorized type of ACFT are allowed to perform this procedure. This authorization is issued by Italian CAA (ENAC)



CHANGE: NEW AFIS CALL SIGN

PROCEDURE DI SALITA INIZIALE

A causa di ostacoli in prossimità dell'aeroporto, i decolli da RWY 01 e da RWY 19 dovranno avvenire in condizioni di volo a vista (Visual Conditions) fino a OZE VOR/DME, da raggiungere a 3600FT o al di sopra. Quindi proseguire su RDL 196 OZE VOR per il punto FORER.

E' responsabilità del pilota la separazione dagli ostacoli e dal terreno durante la fase iniziale di salita in "visual".

Minime meteo aeroportuali:

- ceiling : 3500FT AMSL, 2700FT AGL;
- visibilità: 5 KM

Gradiente minimo di salita (PDG) 450 FT/NM (7,4%) a partire da OZE VOR e fino a raggiungere FL 120.

MCA/MCL: OZE VOR 3600FT; RDL196 OZE /2NM 4500FT; RDL196 OZE/4NM 5400FT; RDL 196 OZE/6NM 6300FT; RDL196 OZE/8NM 7200FT; FORER FL 120 o/or TRL se più alto/*if higher*

Padova ACC darà un'autorizzazione più dettagliata dopo il punto FORER.

Nota: le traiettorie di volo indicate sulla cartina delle procedure di salita iniziale fino ad OZE VOR/DME non hanno un significato operativo, trattandosi di un elemento esclusivamente grafico per indicare quella parte del volo da effettuare a vista.

INITIAL CLIMB PROCEDURES

Due to obstacles in the vicinity of the aerodrome, take offs from RWY 01 or from RWY 19 must be performed under Visual Conditions only, until OZE VOR/DME to be reached at 3600FT or above. Then follow RDL 196 OZE VOR towards point FORER.

Obstacles separation and terrain clearance are pilot's responsibility during the initial visual climb out phase.

Aerodrome meteorological minima:

- ceiling: 3500FT AMSL, 2700FT AGL;
- visibility: 5 KM

Minimum climb gradient (PDG) 450 FT/NM (7,4%) from OZE VOR until reaching FL 120.

Padova ACC will issue detailed ATC clearance after FORER point.

Remark: flight paths showed on the map of the initial climb procedures until OZE VOR/DME do not have an operational meaning, they have to be regarded as a graphical way to highlight the visual part of the flight.

SID

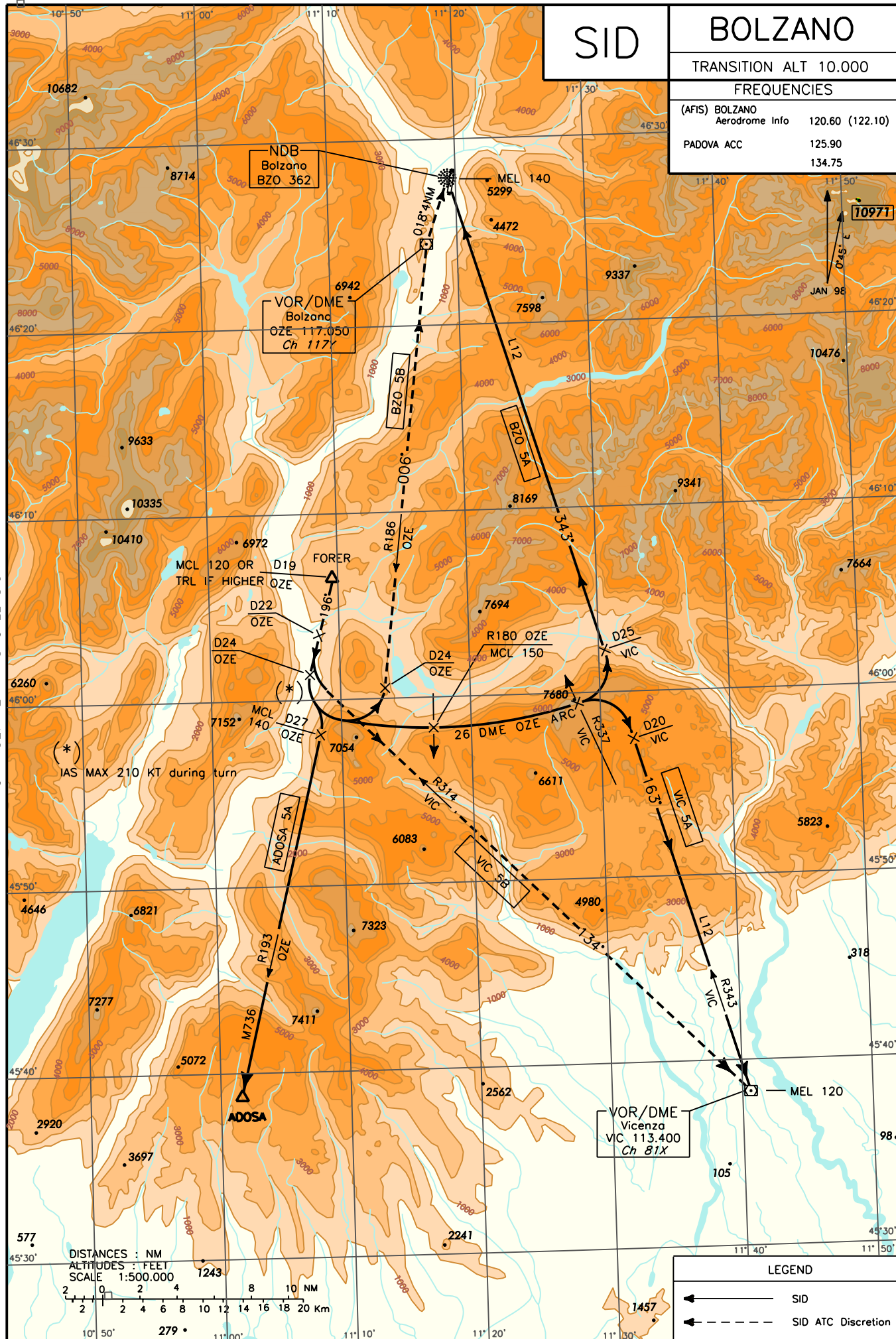
BOLZANO

TRANSITION ALT 10.000

FREQUENCIES

(AFIS) BOLZANO	
Aerodrome Info	120.60 (122.10)
PADOVA ACC	125.90
	134.75

CHANGE: NEW AFIS CALL SIGN



DESCRIZIONE SID

Eseguita la procedura si salita iniziale:

ADOSA 5A

Continuare su RDL 196 OZE VOR/DME.

A 24 NM da OZE VOR/DME virare a sinistra per intercettare RDL 193 OZE VOR/DME per ADOSA.

MCA/MCL: FORER FL 120 o/or TRL se più alto/if higher; RDL 193/27 NM OZE VOR/DME FL 140

BZO 5A

Continuare su RDL 196 OZE VOR/DME .

A 24 NM da OZE VOR/DME virare a sinistra per intercettare e seguire ARCO di 26 NM OZE DME. Attraversando RDL 337 VIC VOR/DME virare a sinistra su rotta 343° per BZO NDB (QDR 163°).

MCA/MCL: FORER FL 120 o/or TRL se più alto/if higher; RDL 180 OZE VOR/DME FL 150

BZO 5B (Discrezione ATC)

Continuare su RDL 196 OZE VOR/DME.

A 24 NM da OZE VOR/DME virare a sinistra per intercettare RDL 186 OZE VOR/DME. Dopo OZE VOR/DME procedere su rotta 018° per BZO NDB.

MCA/MCL: FORER FL 120 o/or TRL se più alto/if higher; BZO NDB FL 140

VIC 5A

Continuare su RDL 196 OZE VOR/DME.

A 24 NM da OZE VOR/DME virare a sinistra per intercettare e seguire ARCO di 26NM OZE DME. Attraversando RDL 337 VIC VOR/DME virare a destra per RDL 343 VIC VOR/DME.

MCA/MCL: FORER FL 120 o/or TRL se più alto/if higher; RDL 180 OZE VOR/DME FL 150

VIC 5B (Discrezione ATC)

Continuare su RDL 196 OZE VOR/DME.

A 22 NM da OZE VOR/DME virare a sinistra per intercettare e seguire RDL 314 VIC VOR/DME.

MCA/MCL: FORER FL 120 o/or TRL se più alto/if higher

SID DESCRIPTION

Initial climb procedure executed:

ADOSA 5A

Continue on RDL 196 OZE VOR/DME.

At 24 NM OZE VOR/DME turn left to intercept RDL 193 OZE VOR/DME inbound to ADOSA .

BZO 5A

Continue on RDL 196 OZE VOR/DME.

At 24 NM OZE VOR/DME turn left to join 26 NM ARC OZE DME. Crossing RDL 337 VIC VOR/DME turn left on track 343° inbound BZO NDB (QDR 163°).

BZO 5B (ATC Discretion)

Continue on RDL 196 OZE VOR/DME.

At 24 NM OZE VOR/DME turn left to join RDL 186 OZE VOR/DME. After OZE VOR/DME proceed on track 018° to BZO NDB.

VIC 5A

Continue on RDL 196 OZE VOR/DME.

At 24 NM OZE VOR/DME turn left to join 26 NM ARC OZE DME. Crossing RDL 337 VIC VOR/DME turn right on RDL 343 VIC VOR/DME.

VIC 5B (ATC Discretion)

Continue on RDL 196 OZE VOR/DME.

At 22 NM OZE VOR/DME turn left to join RDL 314 VIC VOR/DME.